

**EndoFLIP<sup>®</sup>**   
Endolumenal Functional Lumen Imaging Probe

# Tailoring the Perfect Sleeve

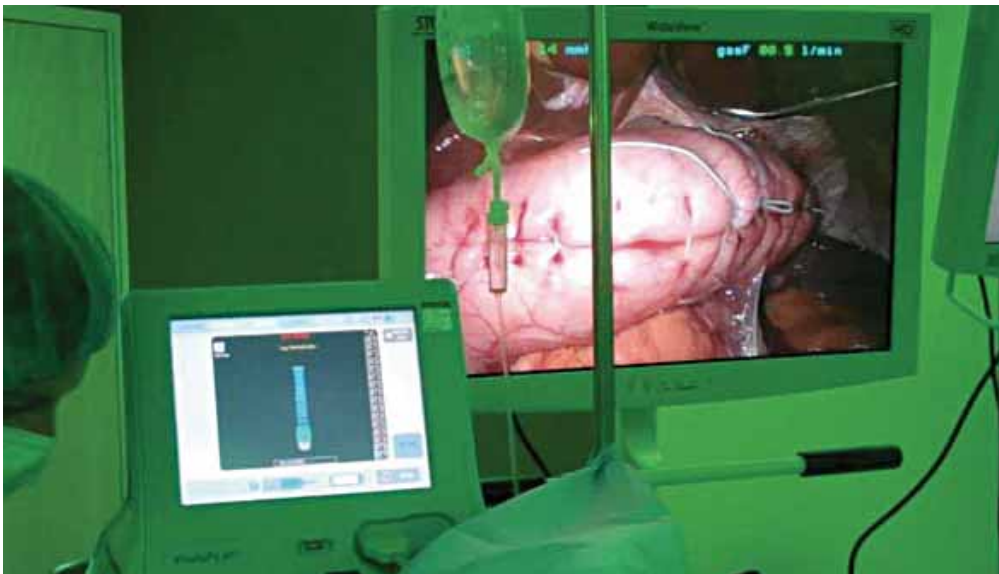
**EndoFLIP<sup>®</sup> in Bariatric Surgery  
Gastric Imbrication/Gastric Plication**



**CROSPON<sup>™</sup>**

## EndoFLIP® in Bariatric Surgery - Intra-operative Gastric Sleeve measurement

The EndoFLIP® EF-620 is a disposable balloon catheter that when connected to the EndoFLIP® EF-100 system gives real-time sleeve measurements on the screen. The balloon catheter contains a series of electrodes that measure the diameters as well as the volume at every 1 cm along the balloon. The EF-620 catheter has a diameter measurement range of 20-60 French and a measurement length of 16 cm.



Description	Part No
EndoFLIP® System	EF-100
EndoFLIP® Sleeve Catheter	EF-620

### Key benefits of EndoFLIP® when creating sleeves in Bariatric Surgery

- EndoFLIP® offers a unique ability to standardize lumen size and volume on every case for optimum repeatable results. EndoFLIP® allows a surgeon to verify that the sleeve is not being undersized, particularly during cases where the staple line is being over-sewed.
- EndoFLIP® assures the surgeon that there is no obstruction of the anatomy. EndoFLIP® allows a surgeon to verify that the sleeve is not too large either in volume or diameter. A larger bougie than normal may be used followed by selective imbrication down to a known measured diameter to minimize the risk of creating too narrow a sleeve.
- EndoFLIP® offers a unique ability to measure sleeve lumen size in real time during gastric imbrication so that imbrications can be done selectively to achieve the desired sleeve French size.