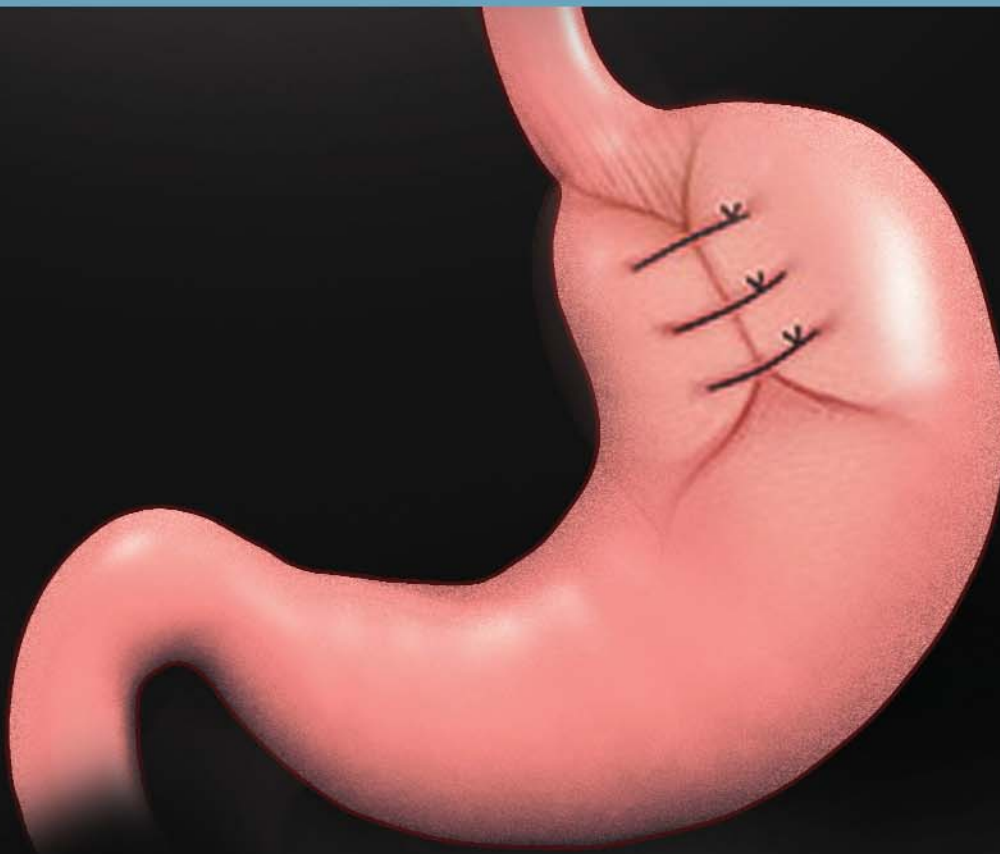


*EndoFLIP*<sup>®</sup>   
Endolumenal Functional Lumen Imaging Probe

# Smart Bougie for Surgery of the GEJ

**EndoFLIP<sup>®</sup> in Upper GI Surgery**



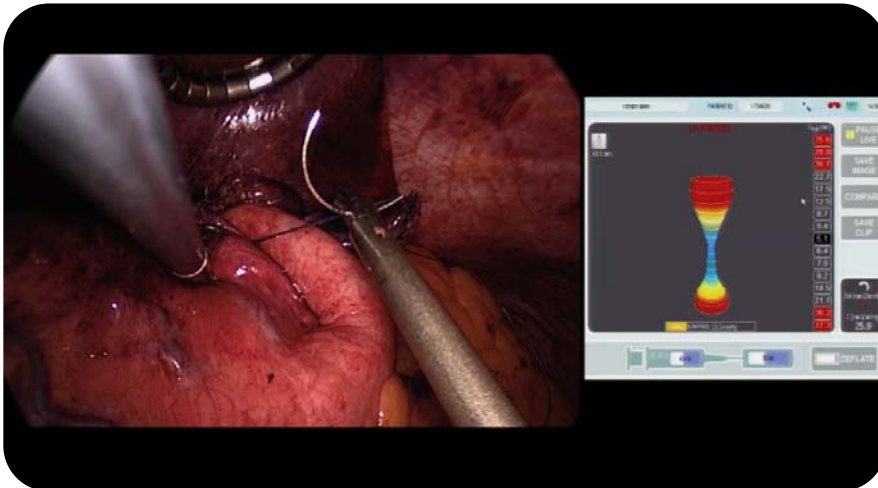
**CROSPON**<sup>™</sup>

## Surgery for GERD

The EndoFLIP® imaging catheter can be placed in the gastroesophageal junction (GEJ) and act as a smart bougie during laparoscopic fundoplication surgery to allow a surgeon measure how tight the GEJ has become, both after crural repair, and during and after completing the wrap. Small hiatal hernias can be measured before and after repair, since the spatial separation of the crus, lower esophageal sphincter, and the wrap itself, can be visualized by virtue of the 8cm long image field of the EndoFLIP® EF-325 catheter. The length of the wrap may also be measured. For new and varied endolumenal procedures, EndoFLIP® may be used to assess the GEJ at different stages during the procedures to determine whether the desired narrowing or distensibility of the LES has been achieved.

## Surgery for Achalasia

During a Heller Myotomy for Achalasia, the EndoFLIP® catheter can be placed in the GEJ. As the longitudinal and circular fibers are cut, the GEJ can be observed to open, thereby providing a tool to assist a surgeon in determining when sufficient muscle has been cut. Recent work has demonstrated how the EndoFLIP® catheter may be used when performing a myotomy transorally using endoscopic submucosal tunnelling (POEM).



### Description

### Part No

EndoFLIP® System	EF-100
EndoFLIP® Catheter - Upper GI measurements	EF-325*

\*FDA 510k pending